

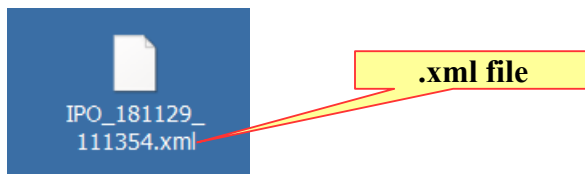
## Avaya IP Office Standard Mode Install PLDS Licenses Telquest Tech Support

The new PLDS License install method is different than the traditional ADI License method.

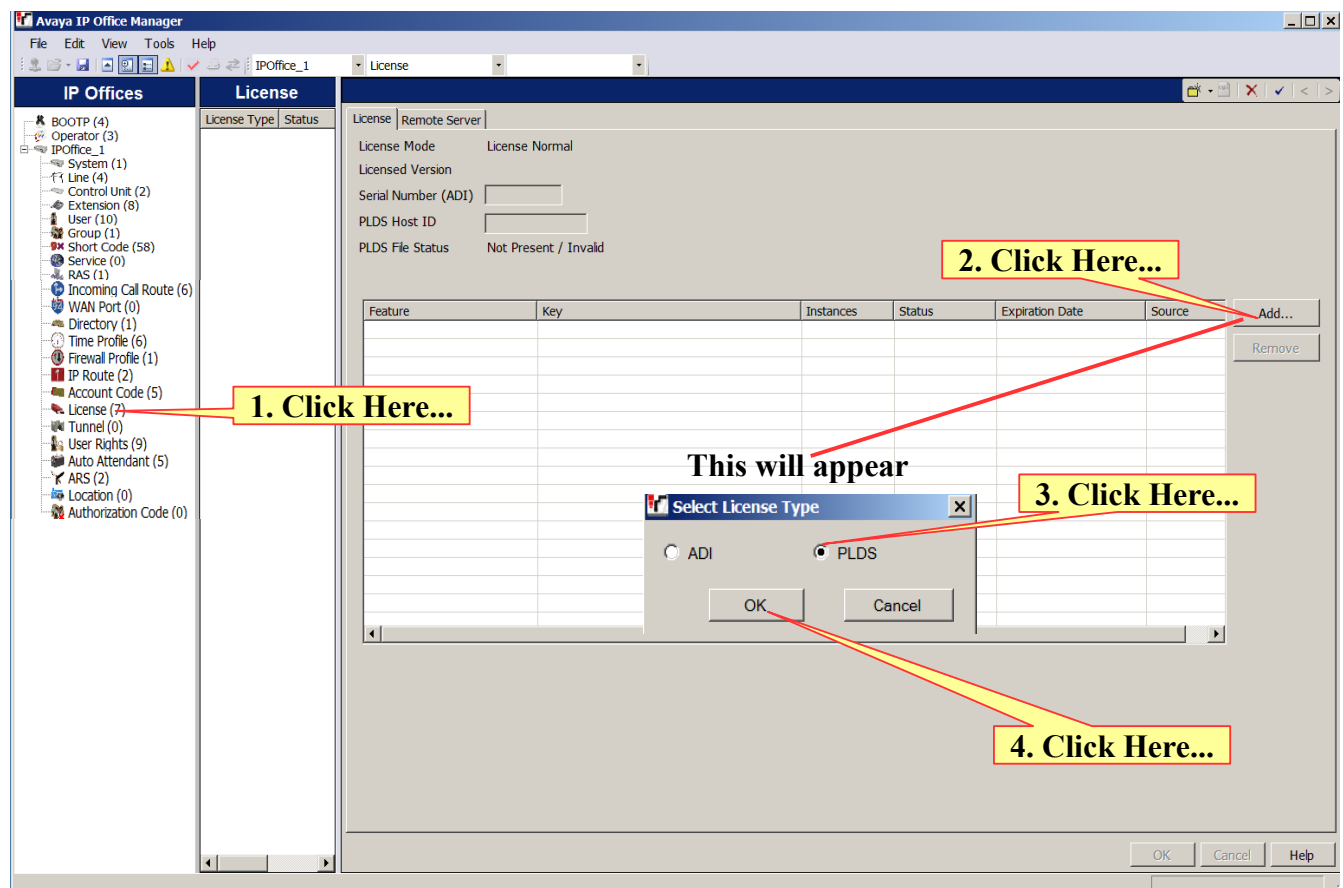
You will receive an attached .xml File via email.

Click and Drag that .xml File to your Desktop.

It will look similar to this on your Desktop:



Now, open the Manager program and connect to the IP Office.



## 1. Click Here...

## 2. Click Here...

**This is the .xml file that  
you placed on your Desktop**

### 3. It will jump to here

#### 4. Click Here...

The screenshot shows the Avaya IP Office Manager application window. The title bar reads "Avaya IP Office Manager REC Humboldt [9.1.1200.212] | Administrator(Unknown) C:\Users\ADMIN\Desktop\AAA Cust IPO\REC Humboldt.cfg". The menu bar includes File, Edit, View, Tools, and Help. Below the menu bar is a toolbar with various icons. The main window is divided into three panes. The left pane shows a tree view of IP Offices, with "REC Humboldt" selected. The middle pane shows the "License" tab, which is divided into "License Type" and "Status" sections. The right pane shows the "License" tab, which is divided into "License" and "Remote Server" sections. The "License" section displays the following information:

- License Mode: License Normal
- Licensed Version: 9.1
- Serial Number (ADI): 1429721999
- PLDS Host ID: 111429721999
- PLDS File Status: Valid

Below this information is a table with the following columns: Feature, Key, Instances, Status, Expiration Date, Source, and an empty column. The table contains two rows of data:

| Feature                   | Key | Instances | Status | Expiration Date | Source     |  |
|---------------------------|-----|-----------|--------|-----------------|------------|--|
| Essential Edition         | N/A | 1         | Valid  | Never           | PLDS Nodal |  |
| Voice Networking Channels | N/A | 4         | Valid  | Never           | PLDS Nodal |  |

At the bottom of the right pane, there is a yellow box with the text "This is how the licenses will be displayed". To the right of the table, there are buttons for "Add..." and "Remove".

